

~All Phases~  
**EMMICK'S**  
*Award Winning*  
**TAXIDERMISTRY**  
 www.allphasesemmickstaxidermy.com

*From Birds to Cats and Habitats, Badgers to Moose and African too. Big Game or Small, We Do it All!*



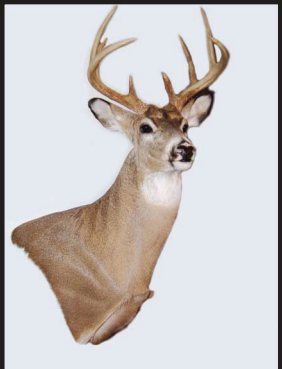
**Master Taxidermist Darrol Emmick**

1411 21st St. West • Billings, MT 59102  
 Cell: 406-591-6699

**Game Heads and Full Body Mounts**

(All Prices Subject To Change)	<i>Shoulder</i>	<i>Life Size</i>
Deer & Antelope	\$550.00	\$2,885.00
Moose	\$1,485.00	\$7,885.00
Elk	\$1085.00	\$4,885.00
Elk Bugling	\$1,285.00	\$4,985.00
Buffalo	\$1,685.00	\$8,885.00
Buffalo, Open Mouth	\$1,985.00	\$9,285.00
Caribou	\$1085.00	\$3,985.00
Mountain Goat	\$585.00	\$2,385.00
Black Bear	\$550.00	\$2,885.00
Brown, Grizzly Bear	\$600.00	\$3,800.00
Mountain Lion	\$585.00	\$2,485.00
Big Horn Sheep	\$785.00	\$2,585.00
Wolf	\$585.00	\$2,485.00
Musk Ox	\$985.00	\$5,185.00
Javelina (Wild Boar)	\$585.00	\$2,485.00
Bobcat, Lynx, Wolverine	\$385.00	\$985.00
Fox & Coyote	\$385.00	\$785.00
Raccoon & Badger	\$285.00	\$685.00
Rabbit, Squirrel, Martin, Mink, Etc.		<i>per quote</i>

All pedestal mounts 50% extra  
 Altered mannequins 25% extra  
 Scenery Bases - Time & Material



**Panel Mounts** (All Prices Subject To Change)

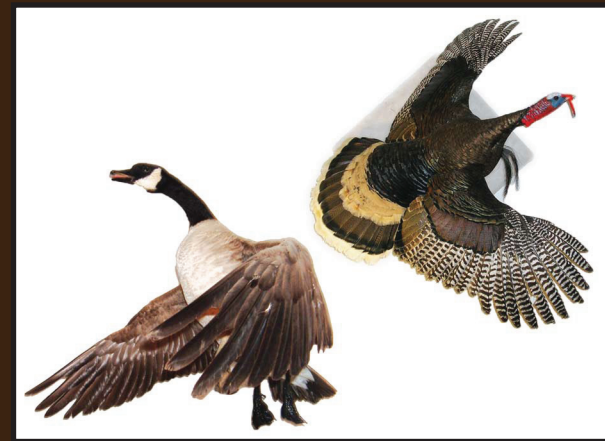
Deer & Antelope	\$125.00
Elk & Caribou	\$185.00
Moose	\$200.00

**Open Mouth Full Head Rugs**

Mountain Lion	\$195.00 per linear Foot
Wolf, Bear	\$195.00 per linear Foot
Badger, Fox, Raccoon	\$585.00 per linear Foot

**European Mounts**  
*Boiled & Bleached / European Plaque*

Antelope, Deer & Goat	\$120.00	} Cost of Plaque Plus \$20.00
Moose, Elk & Caribou	\$185.00	
Buffalo Skulls	\$275.00	<i>per quote</i>



**Birds** (All Prices Subject To Change)

	<i>Standing</i>	<i>Flying</i>
Pheasant & Grouse	\$195.00	\$195.00
Sage Hen	\$195.00	\$195.00
Huns, Chukar, Franklin	\$150.00	\$150.00
Ducks	\$285.00	\$285.00
Geese	\$485.00	\$485.00
Turkeys (Artificial Head)	\$585.00	\$585.00
Freeze Dried Turkey Head		Extra \$175.00





## Field Care

To ensure real quality the skin you take your taxidermist has to be properly prepared. Trouble spots on the ski-spoilage and hair slippage-start early so here are some suggestions on how to handle a skin for mounting or tanning.

After the kill (don't cut the throat) a specimen should be skinned as soon as possible (refer to skinning procedures). If that is not possible do not let the specimen lie on the ground for a long period of time on the same side. The ground serves as insulation and will retain heat on the spot. The rest of the skin should have a chance to air out and cool. The heat spot laying on the ground may later show hair slippage. When possible remove skin and lay flat on the ground. Any skins or capes where the hair is badly stained by blood should be washed off. Try to keep the flesh side as dry as possible, allow it to cool off, then salt (a thin layer that covers the skin is best).

Remember, when at all possible on a hunting trip to have some non-iodized salt handy. It is your first defense against spoilage. Fold the skin (flesh to flesh) as you prepare to transport it. In reporting a skin, we strongly suggest not to place it in a plastic bag, because of heat retention and lack of ventilation. Be careful not to place skin near any source of heat such as a car trunk over a muffler. Moist and warm environment makes an ideal place for fast bacteria to grow.

Bring your specimen to a taxidermist as soon as possible.

## Skinning Procedures

**After a kill-**  
DO NOT CUT THE THROAT AND  
DO NOT CUT PAST THE BRISKET.

### Shoulder Mounts:

If you have a tape measure, take a measurement of the specimen's neck size. Place the tape around the base of the neck as shown on the diagram. Pull the tape as tight as possible and record neck size for the taxidermist.

A. Your cut is around the body. BEHIND THE SHOULDER

B. The next cut is around the upper part of the legs and over to the first cut.

C. Your third cut is straight up the back of the neck. From your first cut to the back of the head, just behind the antlers or horns. Now skin down the hide from the shoulders and from around the legs and skin forward to the head. Sever the head off at the base of the skull and take to the taxidermist as soon as possible. If that is not possible then place in plastic bag in freezer.

### Rugs:

A. Your first cut is straight up the belly (make sure you stay in the center) of the specimen. From the anus to the throat.

B. Your next cut is down the inside center of the front legs.

C. Your last cut is down the inside back end of the rear legs. Now skin out the specimen leaving the head and feet for the taxidermist to skin out



## Terms

1. All unclaimed articles will be sold for cost 45 days after completion of order.
2. All rush orders will be 50% extra.
3. Deposits are 50%, non refundable and required on all orders. No work will be completed until the deposit is paid, unless other arrangements have been made previously with the balance due upon completion of specimen.
4. Extra charge for custom forms and bases.
5. Payment plans available.
6. Crating charges are cost of material and labor. Crates are solid plywood for trophy protection.
7. Repairs - as necessary at extra cost to whatever degree required for quality.
8. License numbers - your conservation license number and your carcass tag number or photo copy of license must accompany all game animals or birds for taxidermy.
9. Waterfowl - Your name and address, date and area killed must be attached to Federal Waterfowl. This is a Federal Law.
10. Emmick's Taxidermy reserves the right to contact the proper authorities if a question of legality arises on the taking and possession of game animals or birds.

**ALL TANNING IS ACCEPTED AT OWNERS RISK ONLY!**

